

SPECIFICATION

High Quality, High Efficiency Switching PS/2 Power Supply

**350W ATX12V Output
Universal AC Input
80+ Bronze**

P/N: P6350S 8B

*** Specification Approval ***

This specification (total 9 pages including cover page) in its entirety is approved by:

Company Name	Print Name	Signature	Date
--------------	------------	-----------	------

Specification subject to change without prior notice.



**3261 Keller St.
Santa Clara, CA 95054
Tel: 408-980-9813
Fax: 408-980-8626
Email: infor@topmicro.com**

CONTENTS

1. SCOPE
2. AC INPUT
3. DC OUTPUT
 - 3.1 VOLTAGE and CURRENT LOAD RANGES
 - 3.2 CROSS REGULATION
 - 3.3 OUTPUT RIPPLE and NOISE
 - 3.4 DYNAMIC DC OUTPUT CHARACTERISTICS
 - 3.5 DC OUTPUT ON/OFF CONTROL
4. OUTPUT PROTECTION
 - 4.1 TOTAL POWER PROTECTION
 - 4.2 OVER VOLTAGE PROTECTION
 - 4.3 SHORT CIRCUIT PROTECTION
 - 4.4 RESET AFTER SHUTDOWN
5. POWER GOOD SIGNAL
6. EFFICIENCY
 - 6.1 80PLUS Bronze Specification
 - 6.2 STANDBY MODE
7. COOLING OF PSU
8. ACTIVE POWER FACTOR CORRECTION (PFC)
9. ENVIRONMENT
 - 9.1 OPERATING
 - 9.2 SHIPPING / STORAGE
10. EMC
11. SAFETY
12. MECHANICAL
13. WIRE HARNESS
14. MECHANICAL DRAWING

1. SCOPE

This specification defines electrical performance and characteristic of P6350S 8B Full Range Power supplies which comply with Intel ATX12V v2.2 Requirements and 80PLUS Bronze specification.

2. AC INPUT :

Limits	RANGE ¹ :		Unit
	Minimum	Maximum	
AC Input voltage	90	264	Vac
AC Input frequency	47	63	Hz
AC Input Current		6	Amp(rms)
Inrush current ² (cold)		100	Amp(peak)
Inrush current (warm)	NO COMPONENT OVER STRESSED. NO FUSE BLOW NO DAMAGE TO THE POWER SUPPLY.		
NOTE: 1. The AC input is 90~264 Vac full range. No selectable hard switch is 2. Measured at 25 Deg C Ambient			

3. DC OUTPUT :

3.1 VOLTAGE and CURRENT LOAD RANGES

DC OUPTUT		Tolerance
Group1	+3.3VDC	+5%/-5%
	+5VDC	+5%/-5%
	+12VDC	+5%/-5%
	-12VDC	+10%/-10%
Group2	+5Vsb	+5%/-5%

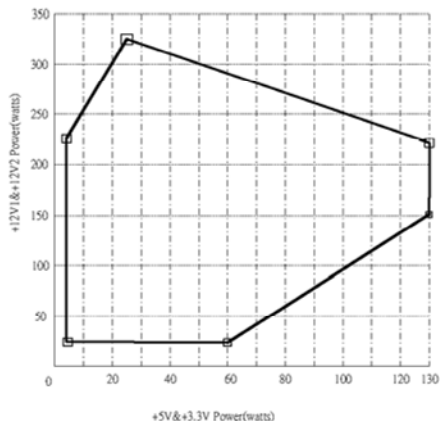
Load Range

Output	Minimum Load	Maximum Load	Peak Load
+12V1	1A	17A	20A
+12V2	1A	17A	20A
+5V	0.3A	20A	X
+3.3V	0.5A	20A	X
-12V	0A	0.8A	X
+5Vsb	0A	2.5A	3.0A

1. Maximum continuous total DC output power should not exceed 350 W.
2. Maximum continuous combined load on +3.3 VDC and +5 VDC outputs should not exceed 130 W.
3. Maximum continuous combined load on +12V1DC&+12V2DC outputs should not exceed 27A/324W.
4. Maximum peak total DC output power should not exceed 385 W.
5. Peak power and current loading should be supported for a minimum of 1 second.

3.2 CROSS REGULATION

The +5V & +3.3V combined load and +12VDC load shall remain within the regulation Defined in section 3.1 over cross load combinations shown as following figure:



3.3 OUTPUT RIPPLE and NOISE

Measurement is made with an oscilloscope with 20 MHz bandwidth. Output should be bypassed at the connector with a 0.1uF ceramic disk capacitor and a 10uF electrolytic capacitor to simulate system load. The length of ground wire on probe should not longer than 40mm, if a Non - differential type of scope was used.

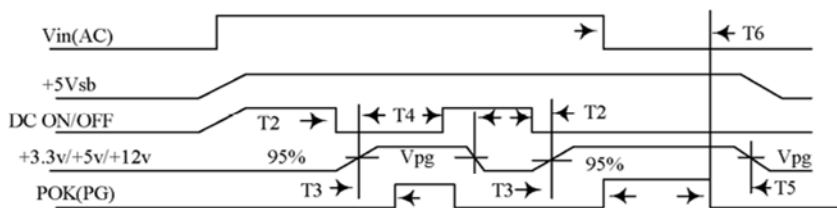
+3.3V	+5V	+12V	-12V	+5Vsb
50mV	50mV	120mV	120mV	50 mV

3.4 DYNAMIC DC OUTPUT CHARACTERISTICS

+/-10% Max. (tested with capacitors added at output) Excursion for 30% max. load change with return to regulation in 0.5 mS.

3.5 DC OUTPUT ON/OFF CONTROL

A low active PS-ON (DC ON/OFF) input signal is equipped, which provide the interface to **ENABLE** or to **DISABLE** the **GROUP1** of DC output. This signal is electrically compatible to interface with **TTL**, **OPEN COLLECTOR** and the **HARD SWITCH**.



SIGNAL NAME	MAXIMUM	MINIMUM
T2 +5V TURN-ON DELAY	150 mS	
T3 RESET TIME	500 mS	100 mS
T4 DC SAVE TIME		1 mS

T5	SAVE TIME	Vpg= 95%		1 mS
T6	HOLD-ON TIME (AT NOMINAL AC INPUT)			10 mS

4. OUTPUT PROTECTION

4.1 TOTAL POWER PROTECTION: (OPP)

Total power 135% max with shut-down and latch off protection.

4.2 OVER VOLTAGE PROTECTION: (OVP)

OVER VOLTAGE AT	ACTIVE RANGE		RESULT
	Min.	Max.	
+3.3V	3.76V	4.3V	Shut down & Latch OFF The Group 1 DC Output
+5V	5.74V	7.0V	
+12V	13.4V	15.6V	

4.3 SHORT CIRCUIT PROTECTION: (SCP)

The short between any output of group 1 will shut down all group1.

The short at group 2 will Shut down both group 1 and group 2.

4.4 RESET AFTER SHUTDOWN

Whenever the power supply latches into shutdown state due to fault condition on its output, The power supply will return to normal operation only after the fault has been removed and the power switch has been cycled off/on with **A MINIMUM OFF TIME OF 20mS.** (PS-ON)

5. POWER GOOD SIGNAL:

Signal Type: open collector +5DC, TTL compatible.

Logic Level: <0.4V while sinking 4 mA.

Logic Level High: between 2.4VDC and +5V output while sourcing 200 uA.

6. EFFICIENCY:

6.1 80PLUS Bronze Specification:

>= 82% at normal input voltage(AC 115V 60Hz or AC 230V 50Hz) when 20%,100% loading; >= 85% when 50% loading.

6.2 STANDBY MODE

During measurement of the "STANDBY MODE" condition, the main converter is off (PS_ON=High). +5Vsb converter is working and standby input power is measured.

true RMS input power (standby) +5Vsb/ 0.1A; input voltage: 230VAC 50HZ	=< 1.2W
true RMS input power (standby) +5Vsb/ 0.25A; input voltage: 230VAC 50HZ	=< 2.2W
true RMS input power (standby) +5Vsb/ 1.0A; input voltage: 230VAC 50HZ	=< 7.0W

7. COOLING OF PSU

A DC FAN was equipped to Cooling The Power Supply and system Load , The FAN will

draw in AIR Through The vent Holes in DC Output Cable Side , and Exhaust it in The AC Receptacle Side.

Fan parameters

Rated Voltage	12VDC
Dimension	80*80*25(mm)
Air flow	34 CFM min.
Noise	<35 db(A)

8. ACTIVE POWER FACTOR CORRECTION (PFC):

8.1 Harmonic current meets IEC1000-3-2 / EN61000-3-2 standards.

8.2 PFC >0.95 at full load.

=0.99 at AC 110v 60Hz(typical)

=0.98 at AC 220v 50Hz(typical)

9. ENVIRONMENT

9.1 OPERATING

Temperature: 0 to 50 °C. (The rated power will derate from 100% to 80% from 40°C to 50 °C Linearly)

Relative Humidity: 20% to 80%

9.2 SHIPPING / STORAGE

Temperature: -40 to 85 Deg C

Relative Humidity: 10% to 95%

10. EMC

Comply to EN61204-3:2000, & FCC Part 15 & Part 2 (CISPR 22 CLASS B) GB9254-1998 , GB17625.1-2003 standards,C-TICK

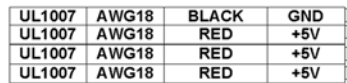
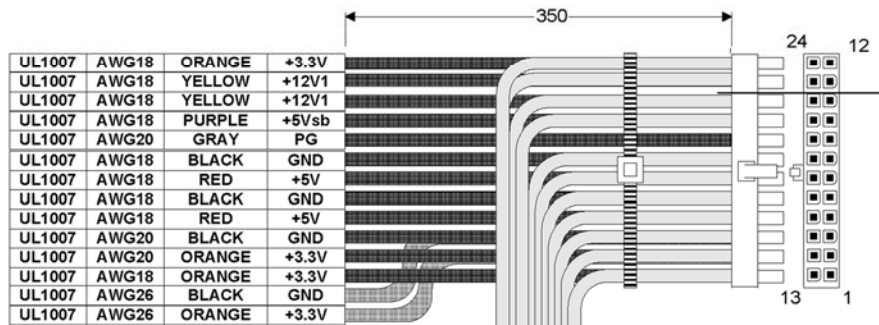
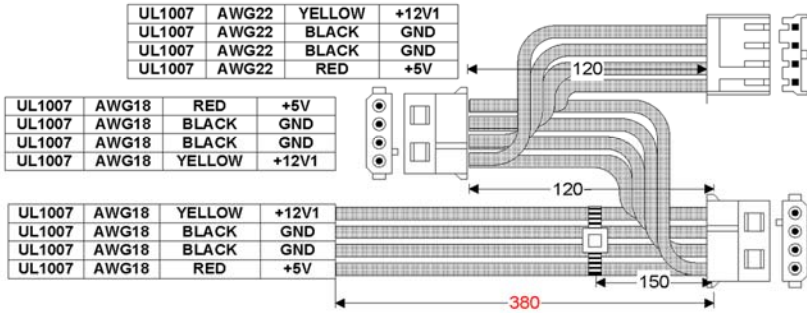
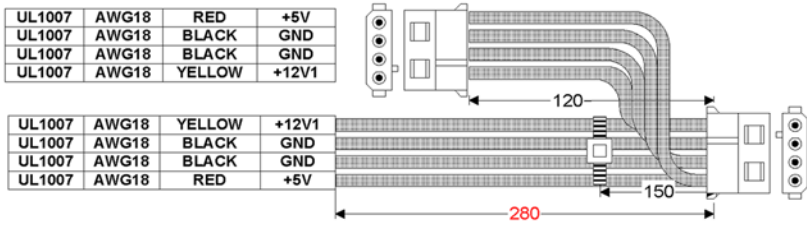
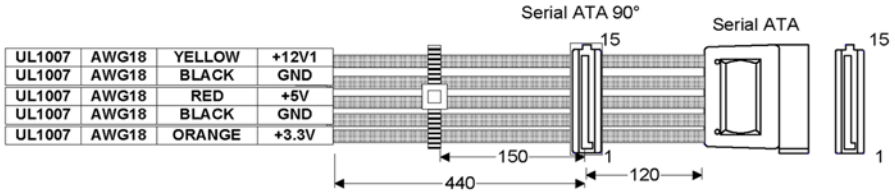
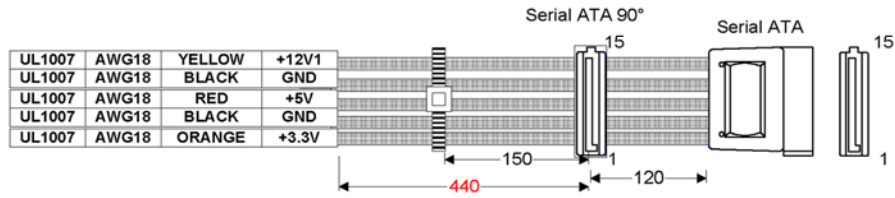
11. SAFETY:

Conform to IEC60950-1:2000 , EN60950-1:2001 , UL60950-1 1st , GB4943-2001 standards : TUV,CUL (LEVEL 6),CB

12. MECHANICAL DRAWING:

Dimension: W150 x L140 x H86 mm

13. WIRE HARNESS



14. MECHANICAL DRAWING

